



Felixstowe Road | London | N9 0DU

Offers Over £330,000



## Key features

- TWO BEDROOM MID TERRACE HOUSE - CHAIN FREE
- REQUIRES UPDATING THROUGHOUT
- RECEPTION-DINING ROOM
- KITCHEN & UTILITY ROOM
- FIRST FLOOR BATHROOM/WC
- GROUND FLOOR CLOAKROOM
- GOOD SIZED REAR GARDEN
- GATED FRONT GARDEN
- CLOSE TO AN ABUNDANCE OF AMENITIES, SCHOOLS & GREEN SPACES
- POTENTIAL TO EXTEND STPP

## Description

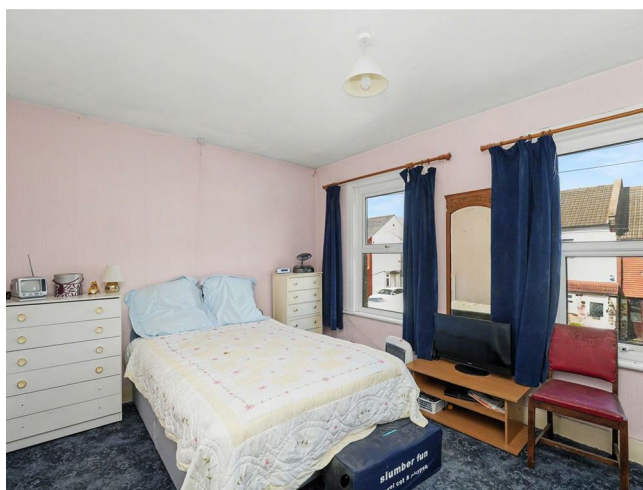
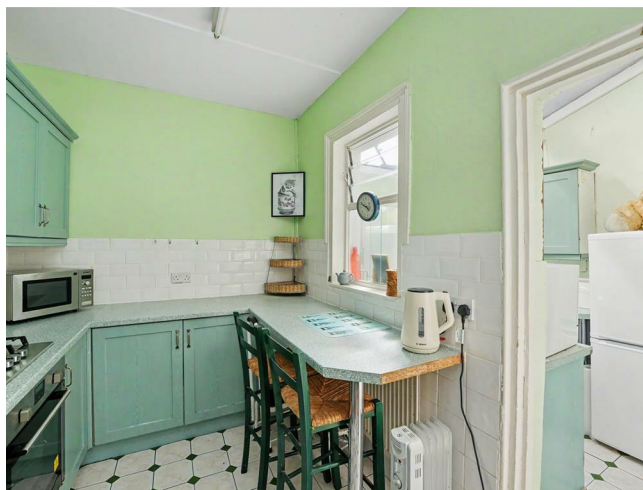
Nestled on Felixstowe Road in London, this charming terraced house presents a wonderful opportunity for those looking to create their dream home. Spanning an inviting 868 square feet, the property features a spacious reception-dining room, perfect for entertaining guests or enjoying family meals.

The house also boasts two well-proportioned bedrooms, providing ample space for relaxation and rest. The ground floor cloakroom and first-floor bathroom, add convenience, making daily routines effortless. While the property is in need of modernisation, it offers a blank canvas for buyers to infuse their personal style and preferences.

One of the standout features of this home is the good-sized garden, which presents an ideal space for outdoor activities, gardening, or simply unwinding in the fresh air. With a little imagination and effort, this garden can be transformed into a delightful retreat.

This property is within easy reach of shops, green spaces, schools and transport links and is perfect for those seeking a project to make their own. With its potential and prime location, this two-bedroom house on Felixstowe Road is a fantastic opportunity not to be missed.

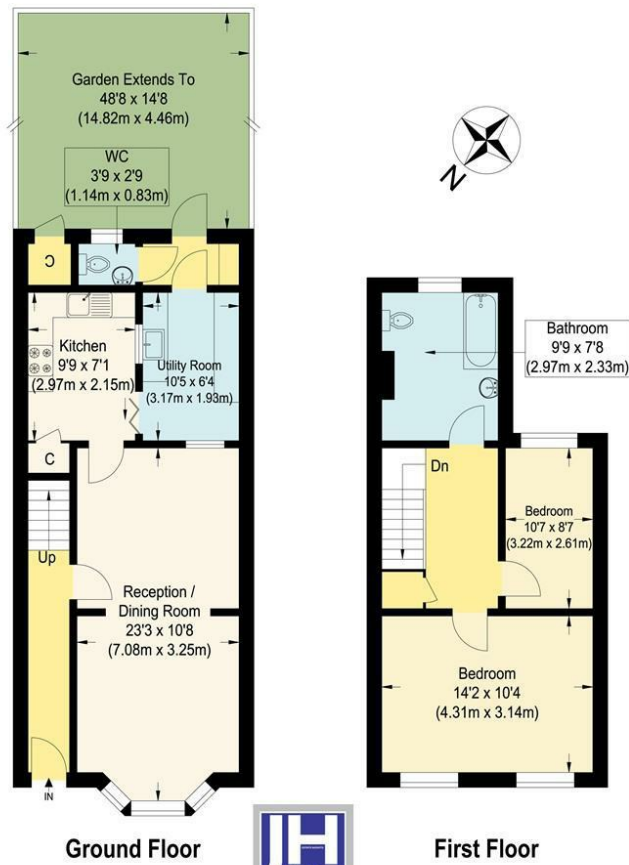
## Directions



A two bedroom, terraced house with plenty of potential to modernise to your own taste. The property provides a good sized reception dining room, kitchen, utility room, downstairs cloakroom and first floor bathroom. The property is complemented by a good sized garden offering the opportunity to cultivate into a tranquil outside space. there is also potential to extend. Viewing is highly recommended.



# Floor plans



## Felixstowe Road

Approximate Gross Internal Floor Area : 80.60 sq m / 867.57 sq ft  
 Illustration for identification purposes only, measurements are approximate, not to scale.

Energy Efficiency Rating		
	Current	Potential
Very energy efficient - lower running costs		
(92 plus) <b>A</b>		
(81-91) <b>B</b>		<b>82</b>
(69-80) <b>C</b>	<b>69</b>	
(55-68) <b>D</b>		
(39-54) <b>E</b>		
(21-38) <b>F</b>		
(1-20) <b>G</b>		
Not energy efficient - higher running costs		
<b>England &amp; Wales</b>	EU Directive 2002/91/EC	



181 Chase Side  
 Enfield  
 Greater London  
 EN2 0PT  
 020 8367 4000  
 sales@james-hayward.com  
 James-Hayward.com